

***advanced FLOW engineering***

**Magnum Force Cold Air Intake System**

**Instruction Manual** P/N: 54-13085R / 54-13085V

Make: **RAM**

Model: **2500**

Year: **2025-2026**

Engine: **L6-6.7L(td) Cummins**

Make: **RAM**

Model: **3500**

Year: **2025-2026**

Engine: **L6-6.7L(td) Cummins**



- Please read the entire instruction manual before proceeding.
- Ensure all components listed are present.
- For technical support please call at 951-493-7185.
- Ensure you have all necessary tools before proceeding.
- Do not attempt to work on your vehicle when the engine is hot.
- Retain factory parts for future use.

Label	Qty.	Description	Part Number
A	1	Air Filter (D2) for 54-13085V	24-90214V
A	1	Air Filter (Pro 5R) for 54-13085R	24-91120
B	1	Air Intake Tube	05-5413085B1
C	1	Housing	05-5413046B2
D	1	Coupler, Silicone Elbow Reducer	05-01812
E	1	Seal, Trim: Double bulb (37.25" Length)	05-01534
F	1	Worm Clamp, 064 (3-9/16" - 4-1/2")	03-50006
G	1	Worm Clamp, 072 (4-1/16" - 5")	03-50010
H	1	Screw, Torx: M4 x 16mm	03-50489

**Installation will require the following tools:**

8mm nut driver or socket, 10mm socket and ratchet, 6" extension, Clip removal tool, T20 torx bit, pliers

Warranty information available at <https://afepower.com/warranty>

**Emissions Disclaimer:**

This product is not currently CARB exempt and is not available for purchase in California or for use on any vehicle registered with the California Department of Motor Vehicles.

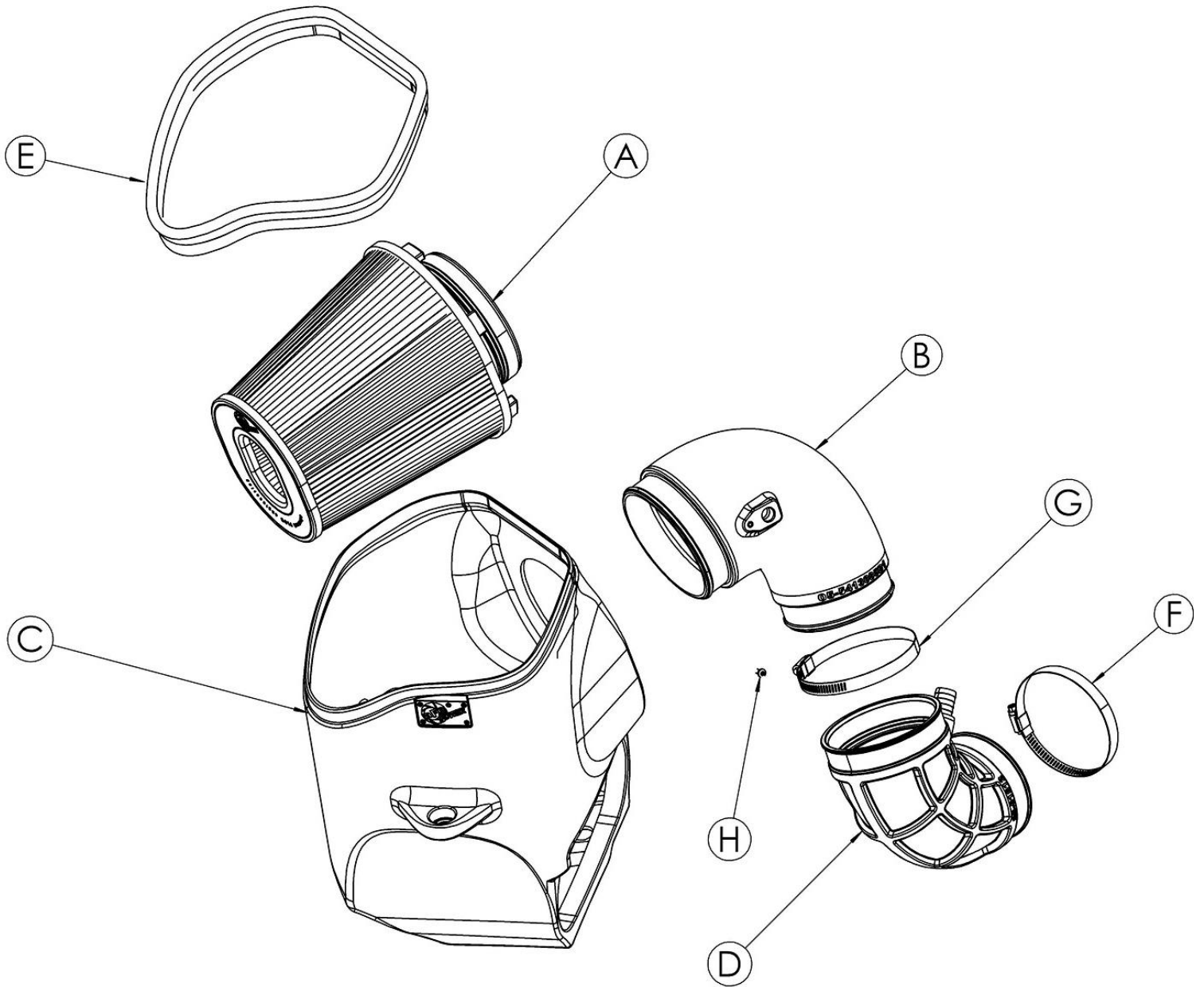
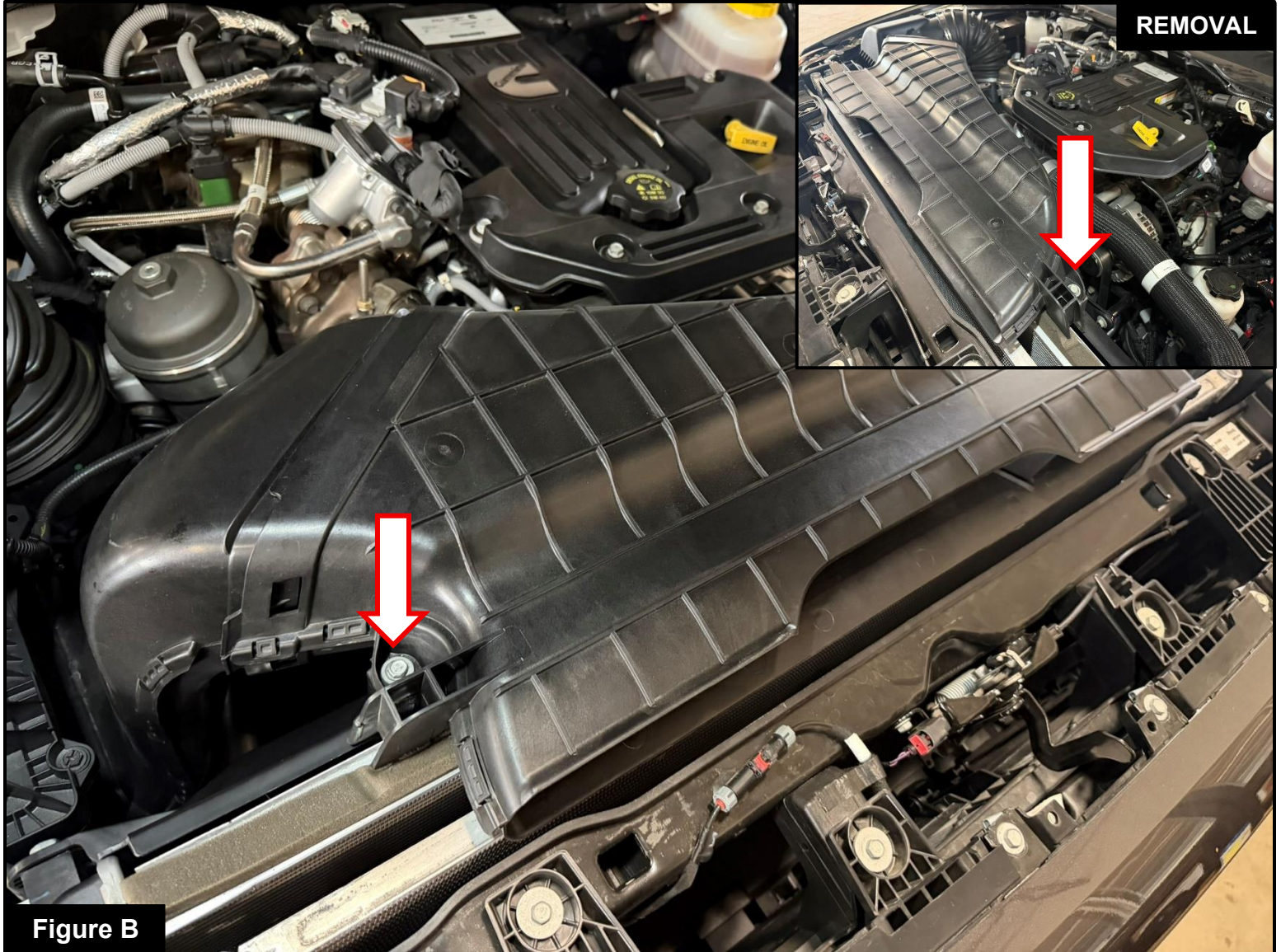




Figure A

**Refer to Figure A for Step 1**

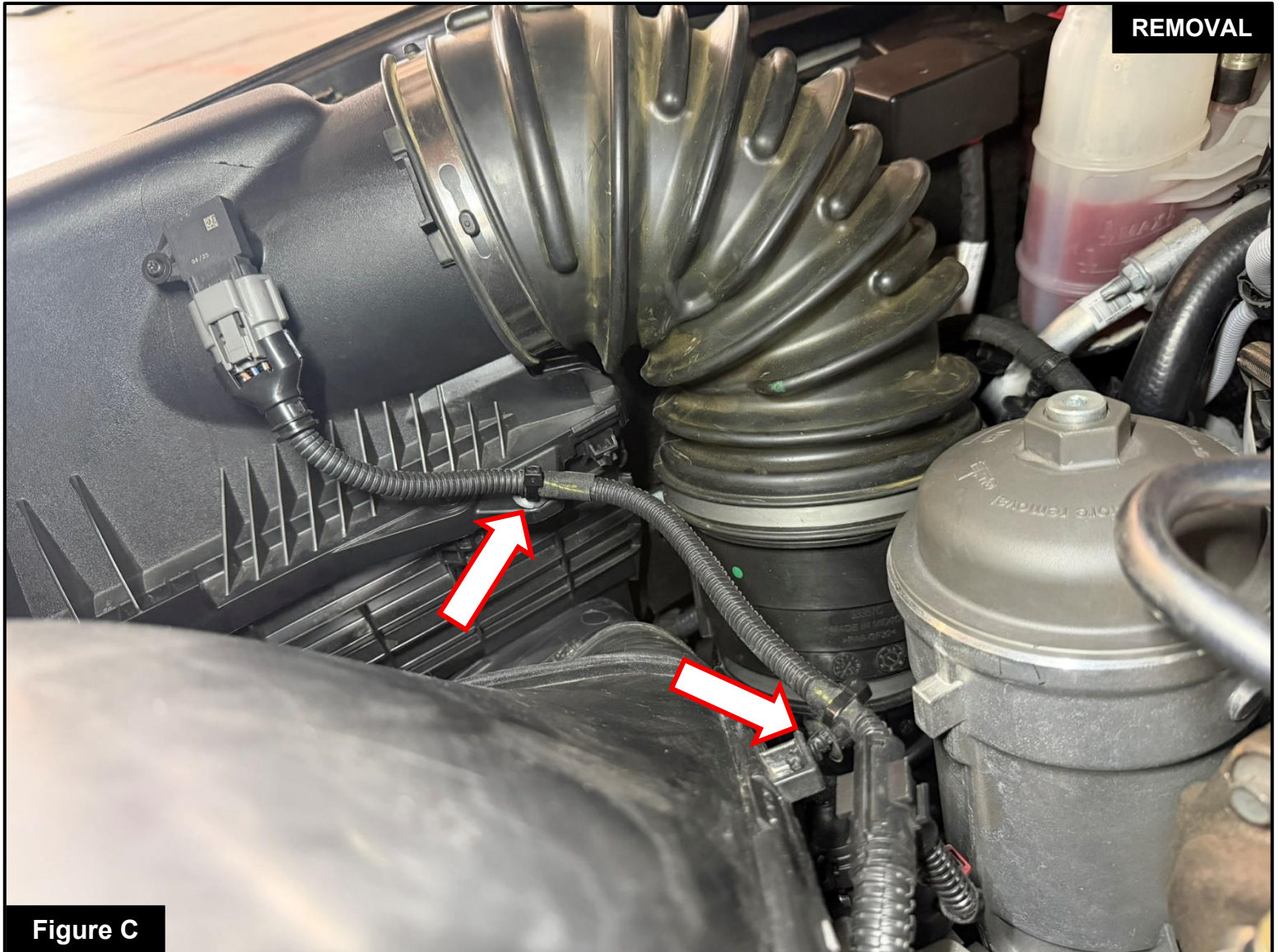
Step 1: Using a trim clip pry tool, disengage and remove the fourteen (14) factory retaining clips securing the factory trim panel. Carefully separate and remove the trim panel to gain access to the scoop assembly.



**Refer to Figure B for Steps 2-3**

Step 2: Using a 10 mm socket or nut driver, remove the two (2) screws securing the scoop assembly to the vehicle. Those screws will be reused to install the factory scoop assembly back on.

Step 3: Using a pry tool, carefully disengage the retaining tabs on both sides of the scoop to release it from the factory airbox scoop inlet.



**Refer to Figure C for Step 4**

Step 4: Unclip and detach the air intake harness from the factory airbox and air scoop inlet.



Figure D

**Refer to Figure D for Steps 5-6**

Step 5: Disconnect the air intake temperature (IAT) sensor electrical connector.

Step 6: Loosen the hose clamp securing the factory intake tube to the airbox. Remove the airbox out of the vehicle by firmly pulling on it.

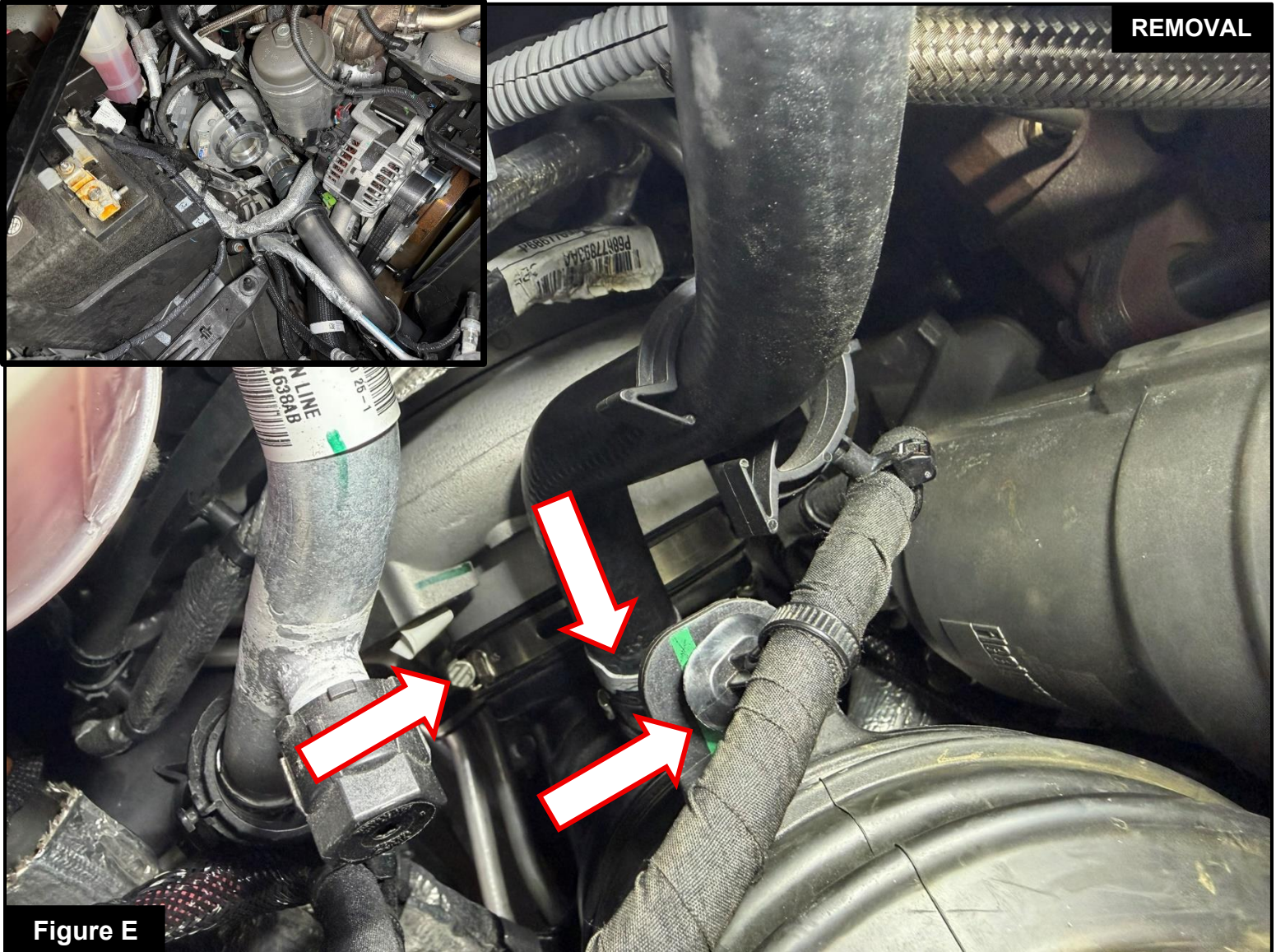


Figure E

**Refer to Figure E for Steps 7-9**

Step 7: Unclip and remove the wiring harness secured to the factory intake tube.

Step 8: Using pliers, compress and slide the spring clamp out, then disconnect the crankcase hose from the intake tube. Keep the spring clamp on the hose as it will be reused to connect to the aFe POWER Coupler.

Step 9: Loosen the clamp from the turbo using a 8mm socket with extension and remove the factory intake tube.

**Figure F****Refer to Figure F for Step 10**

Step 10: Remove the three (3) grommets from the factory airbox and transfer them to the Magnum Force housing.



Figure G

**Refer to Figure G for Step 11**

Step 11: Install seal trim onto the top edge of the Magnum Force housing.



Figure H

**Refer to Figure H for Step 12**

Step 12: Using a T20 Torx driver, remove the air intake temperature (IAT) sensor from the factory intake tube and transfer it to the aFe POWER intake tube. Using the provided screw, secure the sensor to the aFe POWER intake tube. Ensure the sensor is fully seated and properly oriented, tighten the screws until snug. Do not overtighten.

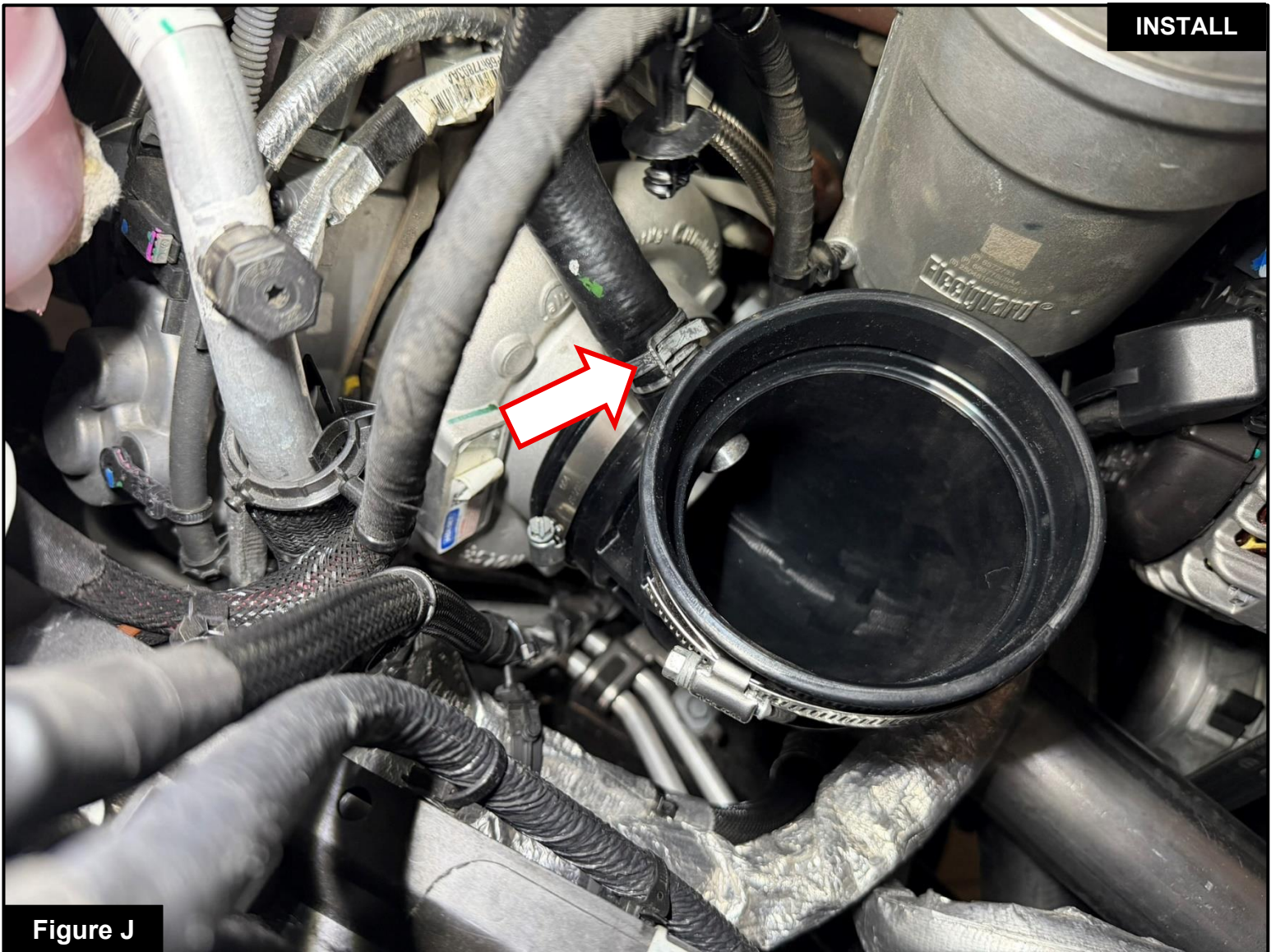


Figure J

### **Refer to Figure J for Steps 13-14**

Step 13: Pre-install the supplied worm gear clamps onto the coupler, placing the #64 clamp on the turbo side and the #72 clamp on the intake tube side. Once the clamps are in position, install the coupler onto the turbo. Do not tighten the clamps at this time.

Step 14: Reconnect the crankcase hose and secure it using the factory spring clamp, ensuring the clamp is fully seated.

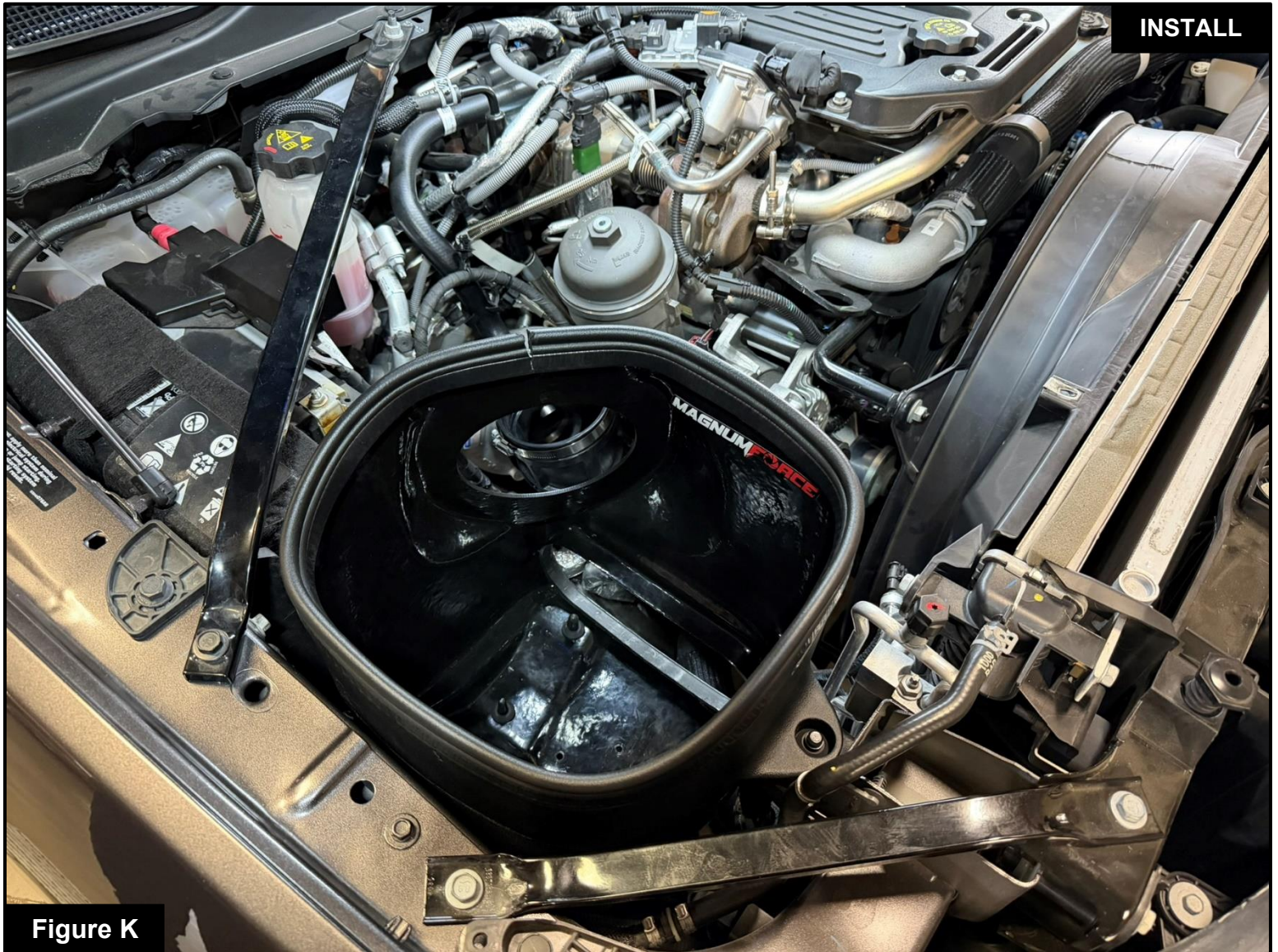


Figure K

**Refer to Figure K for Step 16**

Step 16: Install the aFe POWER housing assembly into the vehicle. Align the grommets on the housing with the factory mounting pegs, then press down firmly to sit the housing securely.



Figure M

**Refer to Figure M for Step 17**

Step 17: Remove the filter clamp from the aFe POWER air filter. Slide the air filter into the aFe POWER housing from the top opening. Then guide the filter flange through the round opening in the housing and snap in the filter. Place the filter clamp on the filter flange but do not tighten at this time.

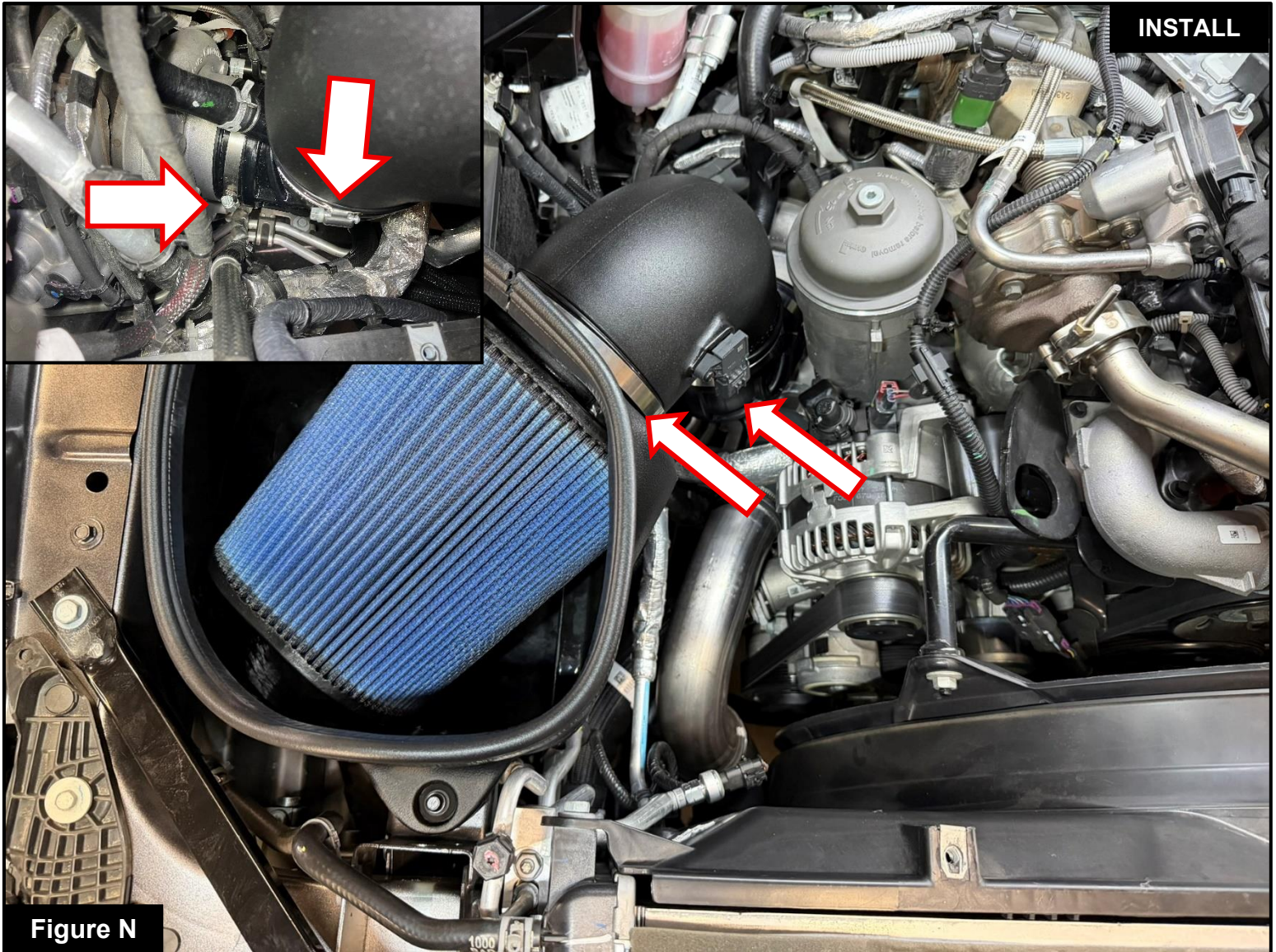


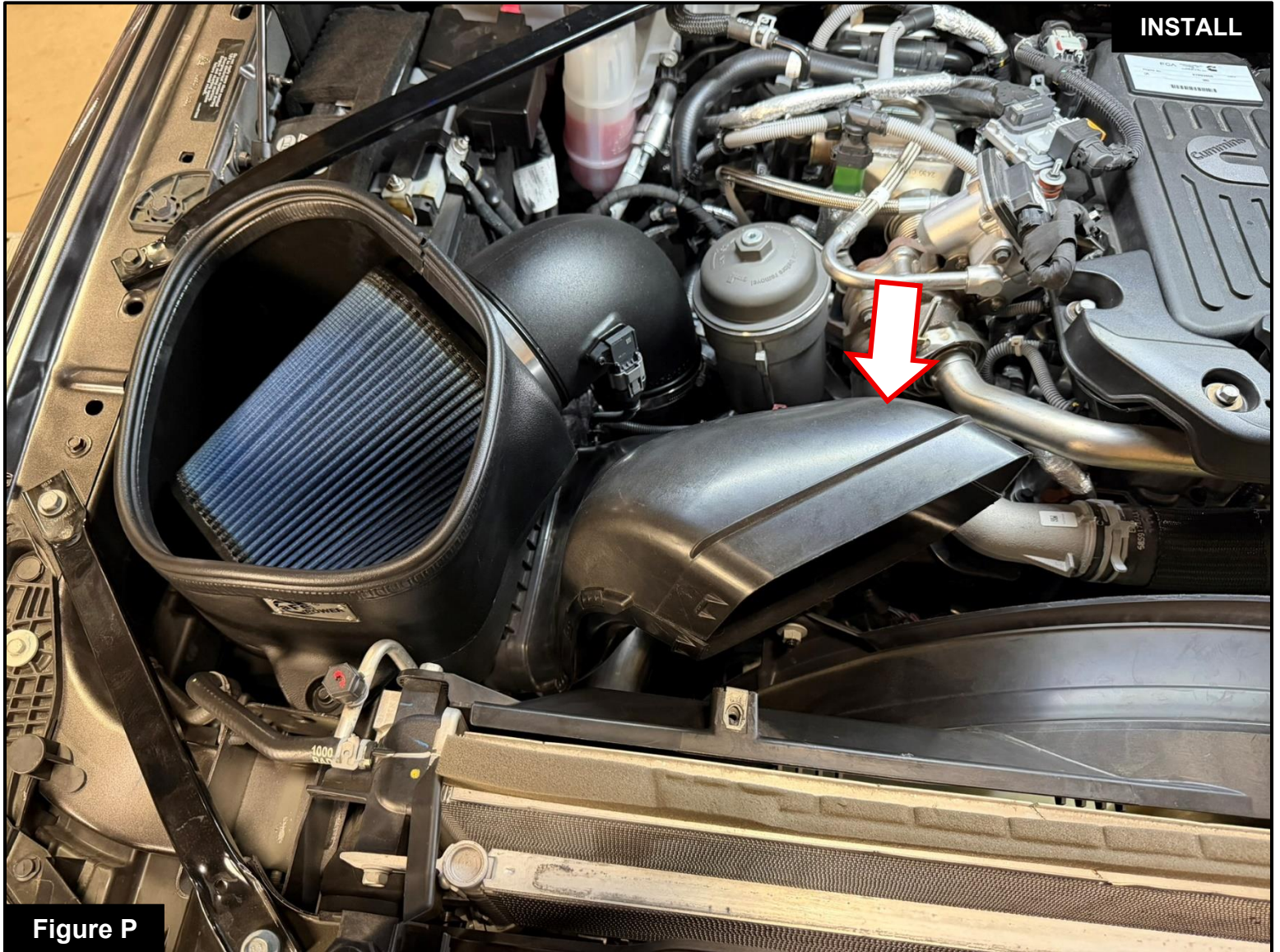
Figure N

**Refer to Figure N for Steps 18-20**

Step 18: Install the aFe POWER intake tube into the coupler first, then slide the tube into the air filter.

Step 19: Make sure the coupler, tube and filter are aligned correctly, then using an 8mm socket or nut driver, tighten all clamps.

Step 20: Reconnect the air intake temperature (IAT) sensor electrical connector, ensuring it is fully engaged and locked in place.



**Figure P**

**Refer to Figure P for Step 21**

Step 21: Install the factory scoop inlet into the Magnum Force housing.

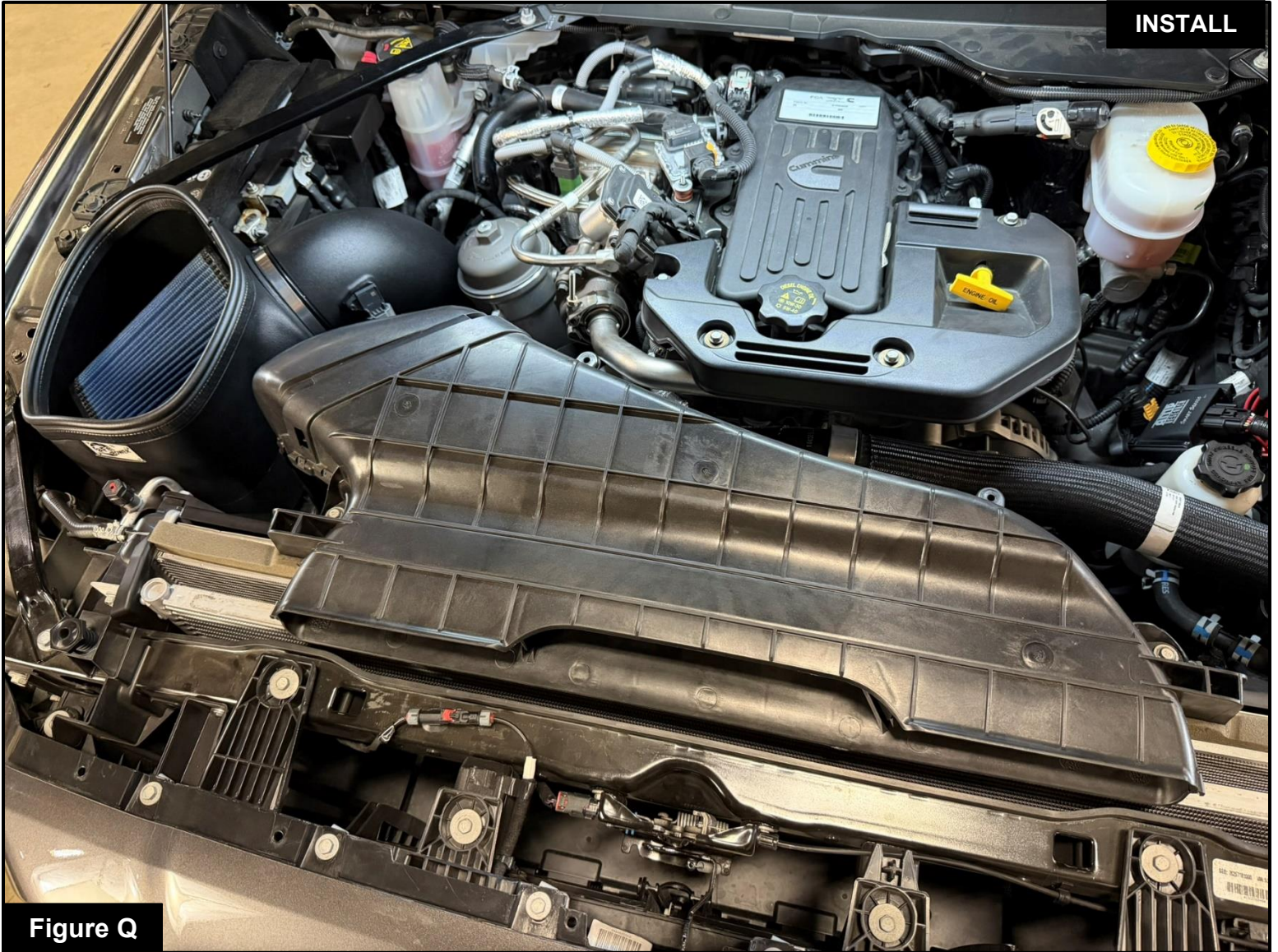


Figure Q

**Refer to Figure Q for Step 22**

Step 22: Reinstall the scoop, ensuring proper alignment. Use the screws removed from **Step 2** to secure the scoop



**Refer to Figure R for Step 23**

Step 23: Reinstall the factory trim and clips.

**Your installation is now complete. Thank you for choosing aFe POWER!**

**NOTE: Check to ensure that all screws, clamps, and connectors are secure after 100-200 miles**



PAGE LEFT BLANK INTENTIONALLY



***advanced FLOW engineering, inc.***

Corona, CA 92879

<https://afepower.com/contact>